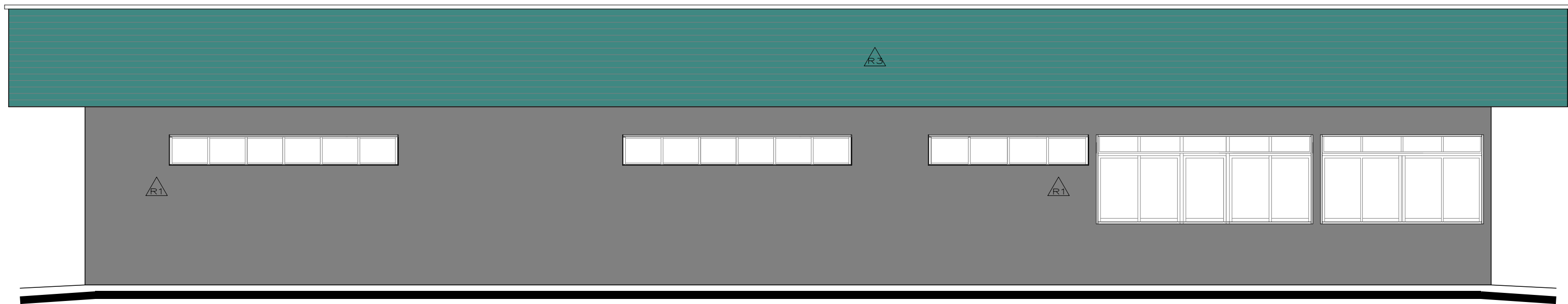
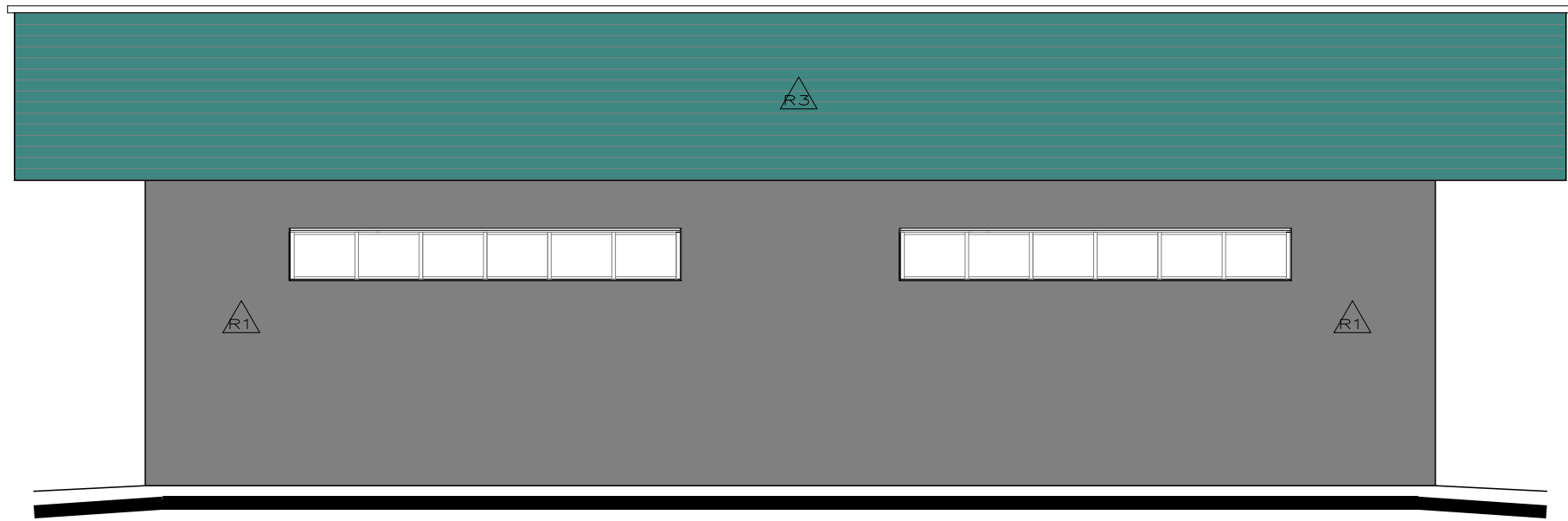




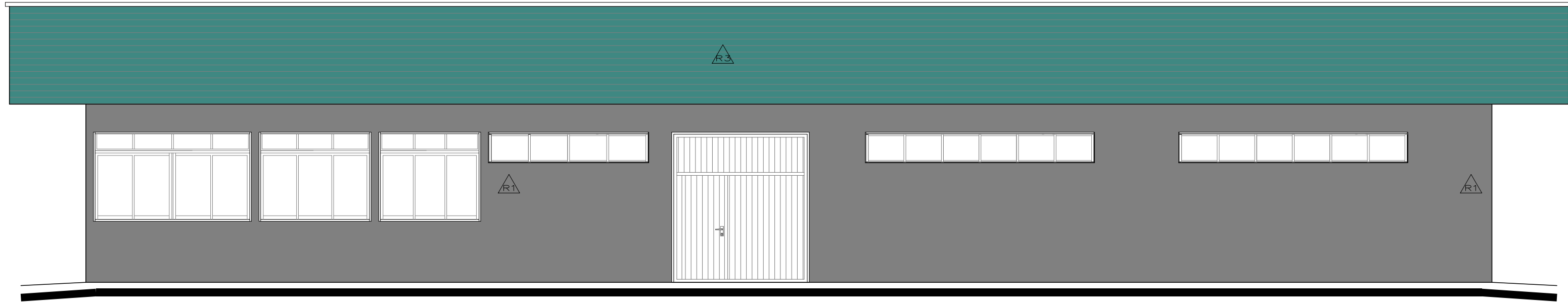
FACHADA LESTE
ESC:1/75



FACHADA SUL
ESC:1/75



FACHADA OESTE
ESC:1/75



FACHADA NORTE
ESC:1/75

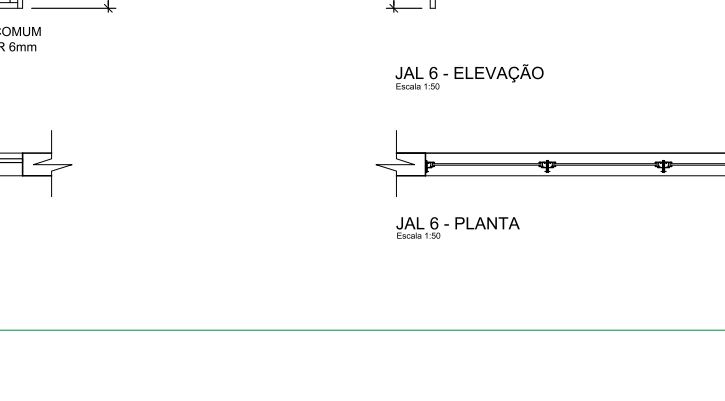
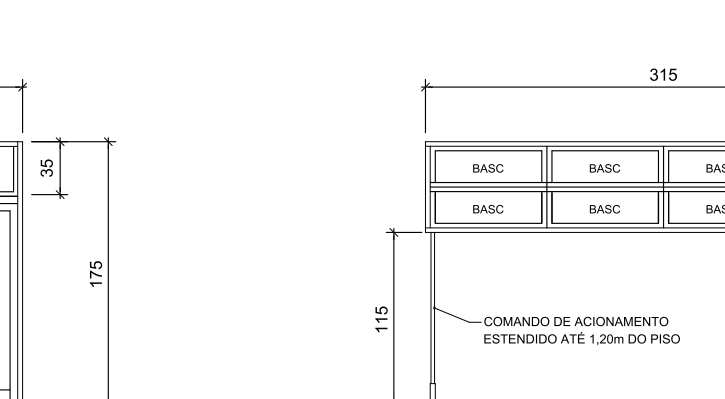
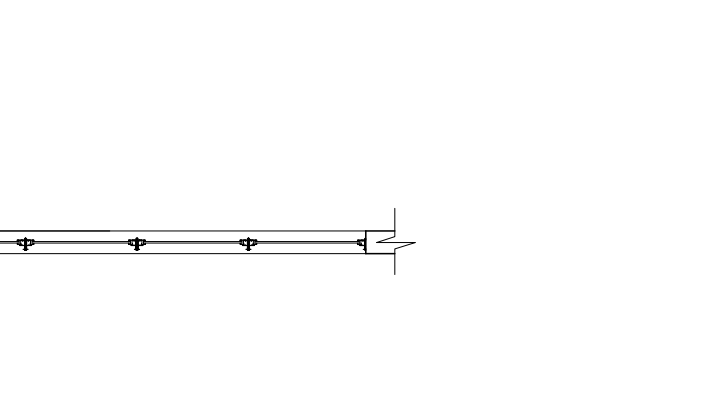
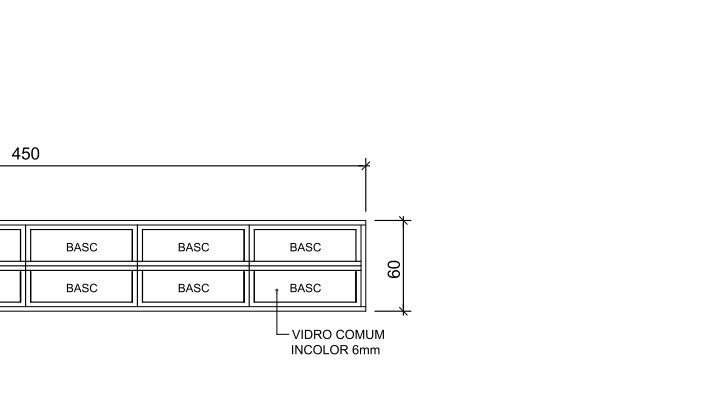
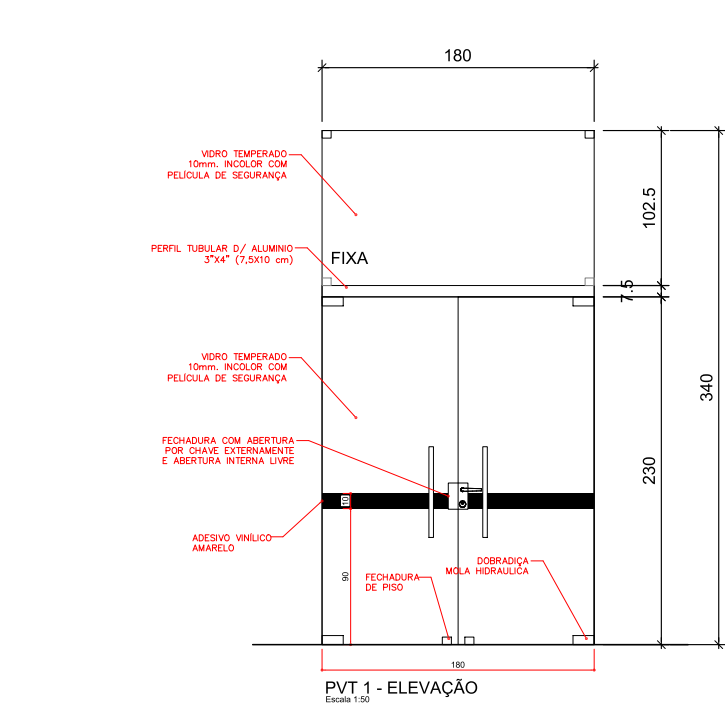
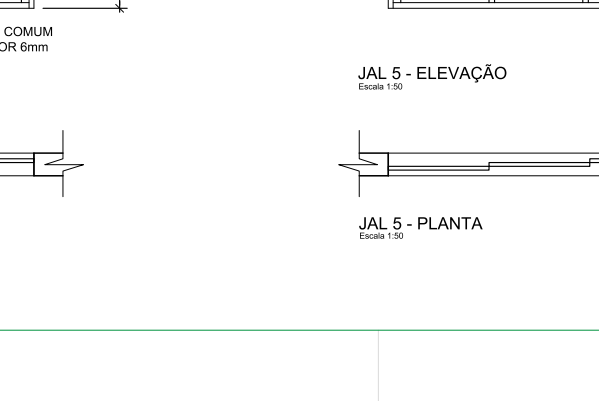
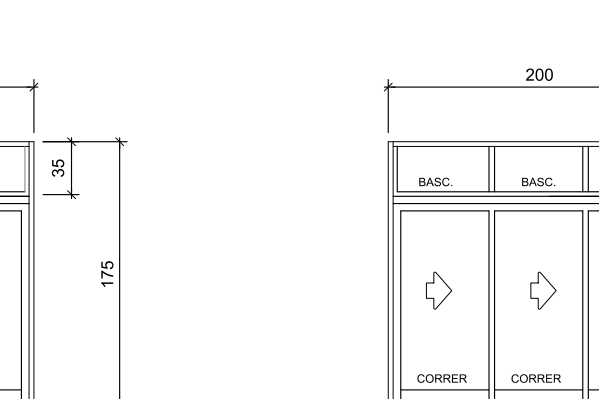
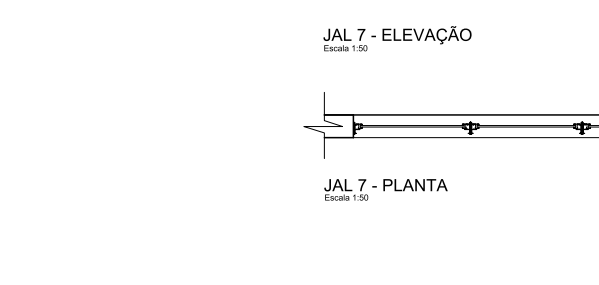
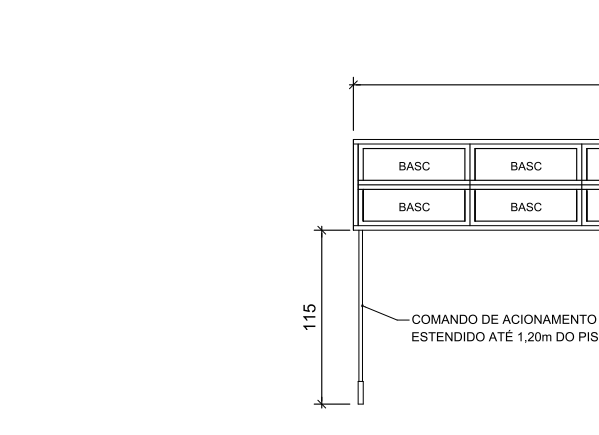
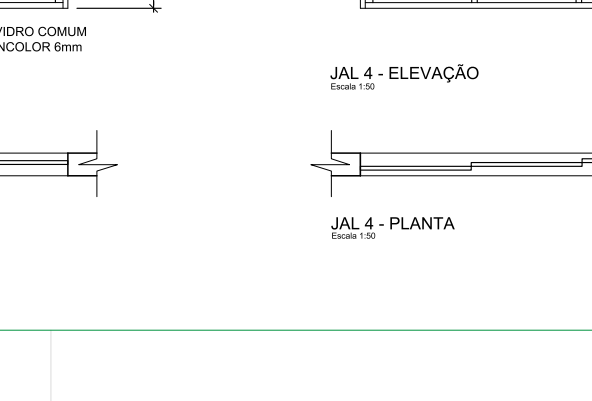
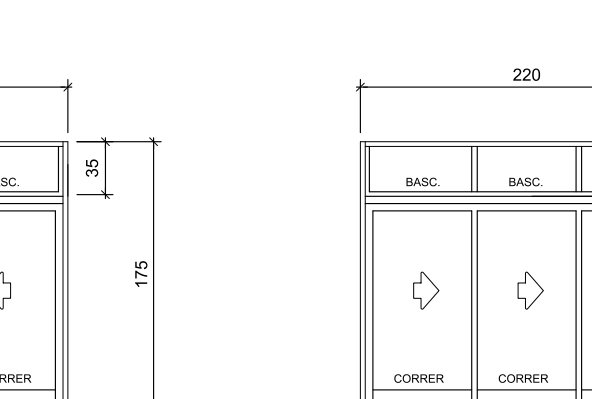
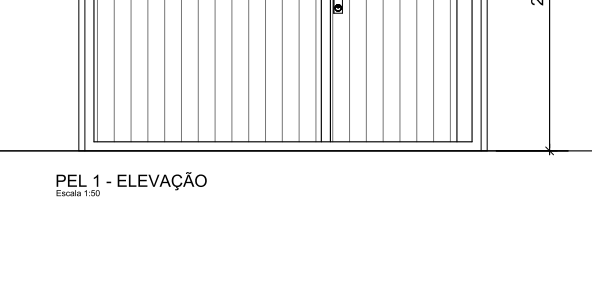
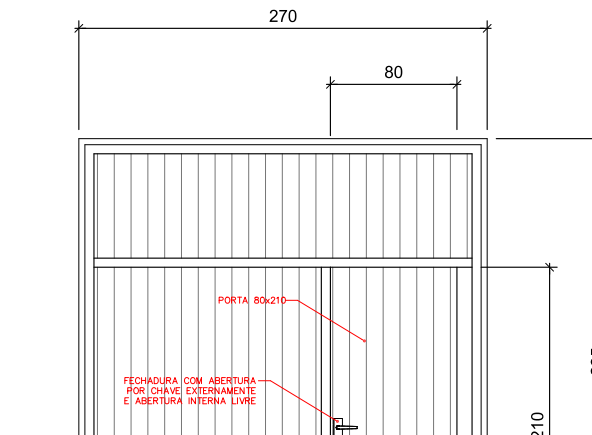
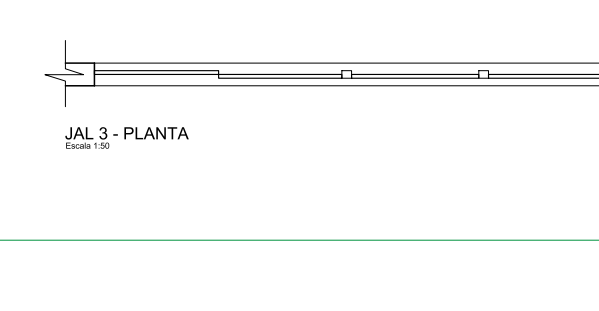
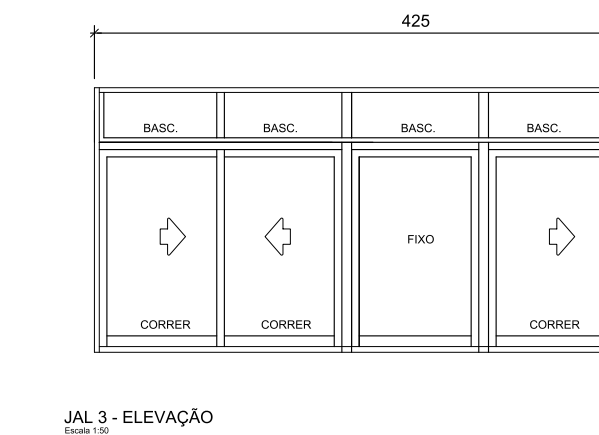
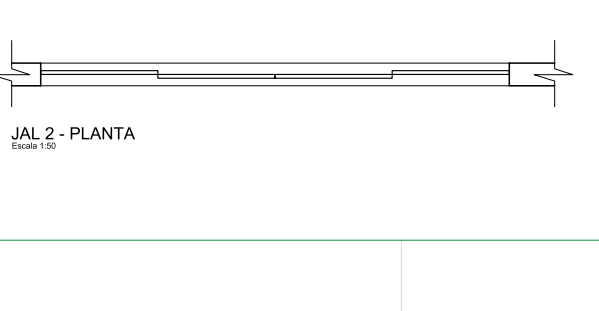
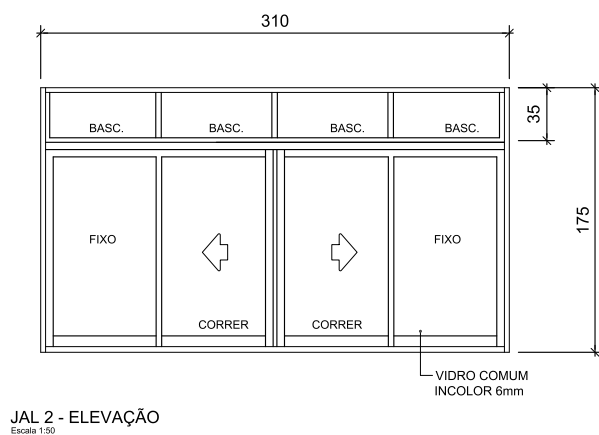
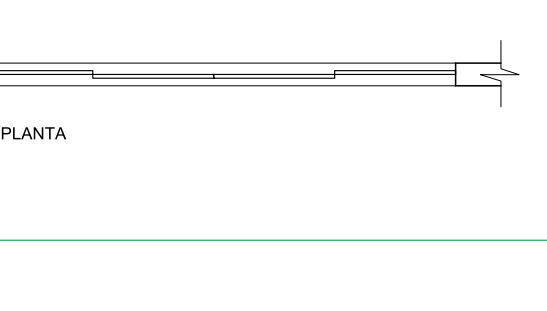
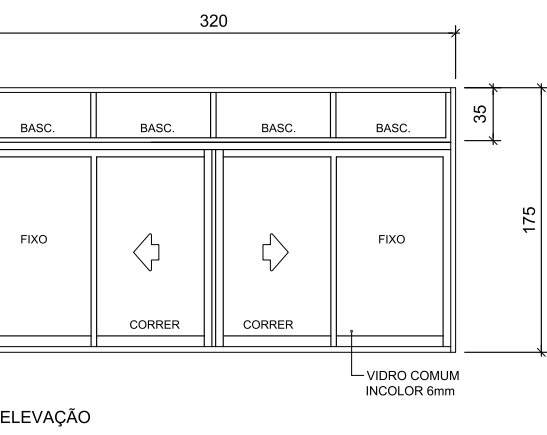
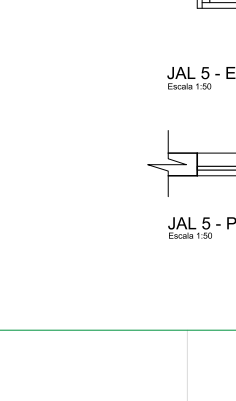
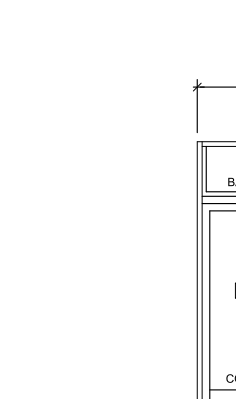
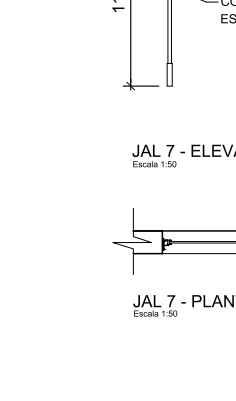
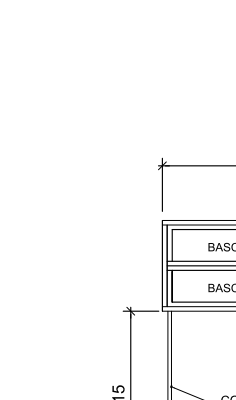
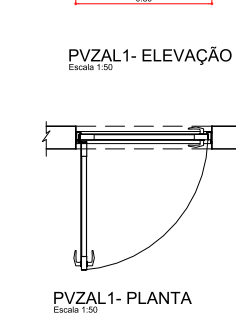
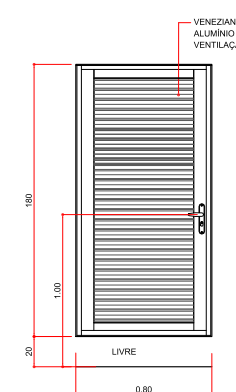
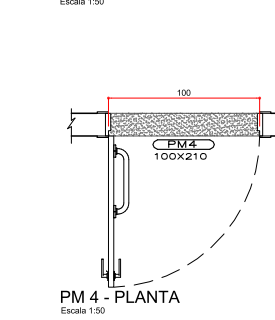
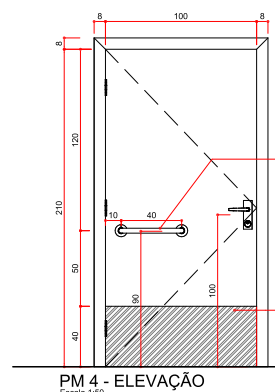
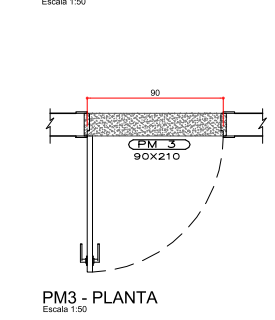
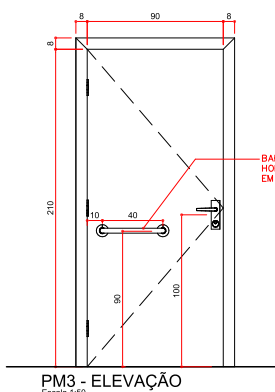
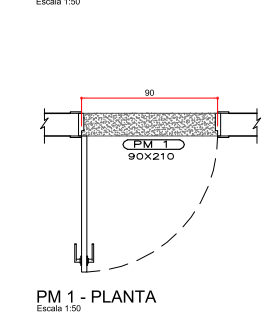
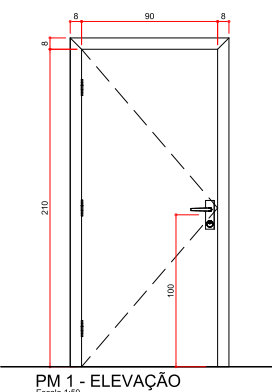
QUADRO GERAL DE ESQUADRIAS

PORTAS

CÓDIGO	DIMENSÃO	PEITORIL	QUANTIDADE	MATERIAL	TIPO
PM1	90 X 210	0	04	MADEIRA	ABRIR
PM2	100 X 210	0	01	MADEIRA	CORRER
PM3	90 X 210	0	02	MADEIRA	ABRIR
PM4	100 X 210	0	02	MADEIRA	ABRIR
PVZAL1	80 X 180	20	05	ALUMINIO	ABRIR
PVT1	180 X 340	0	01	VIDRO TEMP.	ABRIR 2F
PVT2	250 X 210	0	01	VIDRO TEMP.	CORRER/ FIXO
PEL1	270 X 295	0	01	FERRO/ CHAPA	PORTÃO ELEVADO

JANELAS

CÓDIGO	DIMENSÃO	PEITORIL	QUANTIDADE	MATERIAL	TIPO
JAL1	320 X 175	120	03	ALUMINIO	CORRER/FIXO/BASC.
JAL2	310 X 175	120	01	ALUMINIO	CORRER/FIXO/BASC.
JAL3	425 X 175	120	01	ALUMINIO	CORRER/FIXO/BASC.
JAL4	220 X 175	120	01	ALUMINIO	CORRER/BASC.
JAL5	200 X 175	120	01	ALUMINIO	CORRER/BASC.
JAL6	315 X 60	230	02	ALUMINIO	BASCULANTE
JAL7	450 X 60	230	06	ALUMINIO	BASCULANTE



CARIMBOS:



LOCAL:
CERRO LARGO - RS
OBRA:
EDIFÍCIO DE PATRIMÔNIO E ALMOXARIFADO
PROJETO:
ARQUITETÔNICO
CONTEÚDO:
FACHADAS
DETALHAMENTO DE ESQUADRIAS
ENDEREÇO:
RUA JACOB REINALDO HAUPENTHAL, N° 1580

FASE:
EXECUTIVO
REVISÃO Nº:
R00
DATA:
19/11/2019
DESENHADO POR:
ADRIANA
NOME DO ARQUIVO:
PATRIMONIO-ALMOXARIFADO_JAL_PLANTAS+DETALHES.DWG

ESCALA:
INDICADA
TAMANHO FOLHA:
A1
N° PRANCHA:
03
04